

Academic and Emotional Impacts of COVID on Students

Jennifer Drew, S-STEM PI
jdrew@ufl.edu

Alexandria Ardissonne, Sebastian Galindo, Eric W Triplett

UF | **IFAS CALS**
UNIVERSITY *of* FLORIDA



FLORIDA PATHWAYS
TRANSFER STUDENT
SCHOLARSHIPS

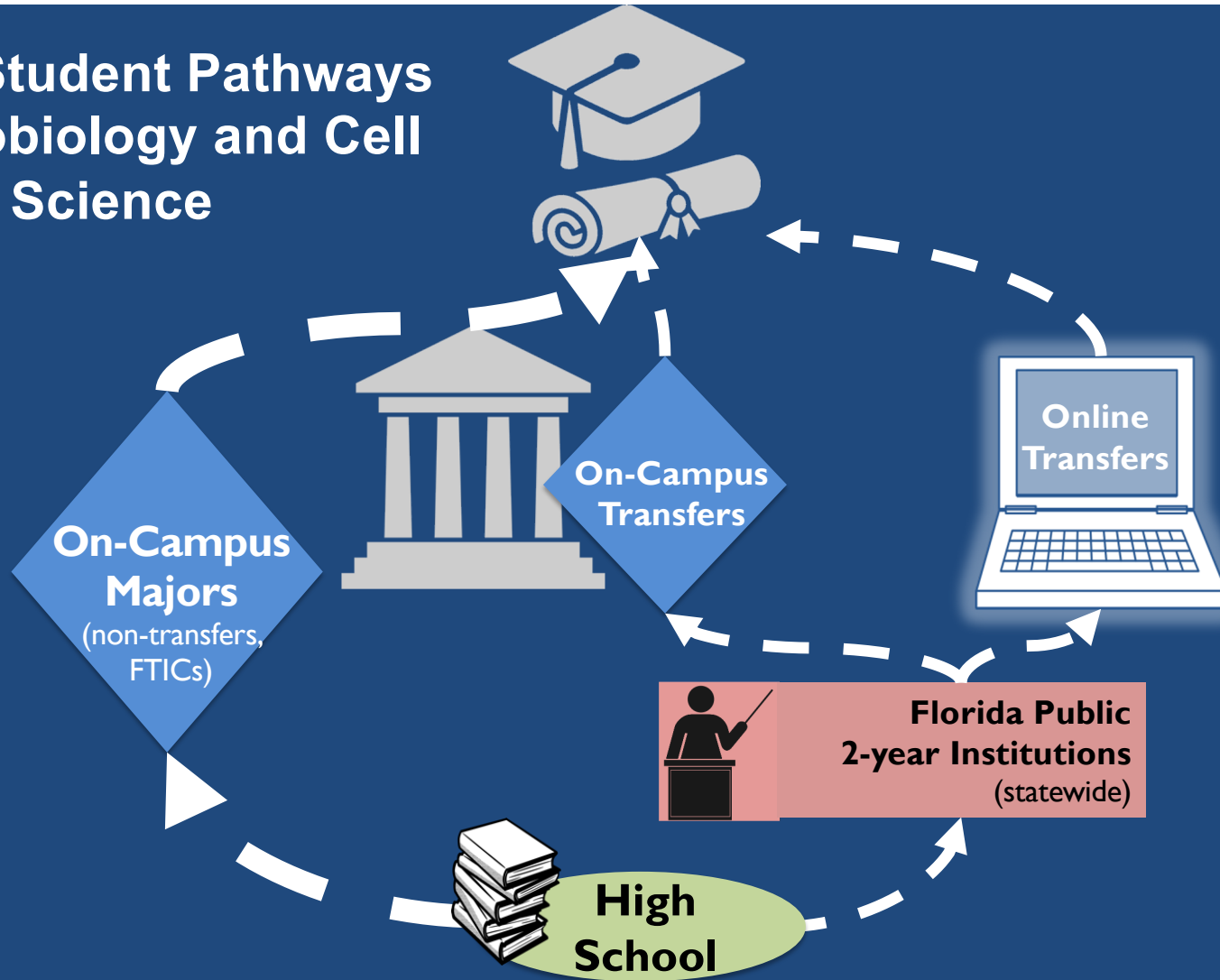
MICROBIOLOGY
& CELL SCIENCE



2 Main COVID Impacts for our S-STEM Program:

- 1. Awarded scholarships to part-time transfer students and expanded participation of nontraditional and diverse students**
- 2. Surveyed all students: S-STEM and on-campus transfers are experiencing more severe impacts**

3 Main Student Pathways in Microbiology and Cell Science





**Awarded 2017
Partnership with Miami Dade College**

Focus on Transfer Students

**112 scholars in AA to BS pathway
On-campus and online tracks**

Increased retention

2-year grad rate 66% vs. 36%

Increased participation in STEM

63% women

41% URM

24 = mean age



**FLORIDA PATHWAYS
TRANSFER STUDENT
SCHOLARSHIPS**

MICROBIOLOGY & CELL SCIENCE

<http://microcell.ufl.edu/s-stem/>



**Think
big**

Online Bachelor of Science in
Microbiology & Cell Science

- 1st hybrid online STEM degree at a land-grant institution, 2011
- 2 + 2 program without relocating
- Courses, curriculum, and instructors are the same
- Began with Miami Dade College, largest MSI
- All lecture courses are online
- **ALL LAB COURSES ARE FACE-TO-FACE***

Transfer students

> URM and > women

Older and financially independent

Lower income

Have dependents

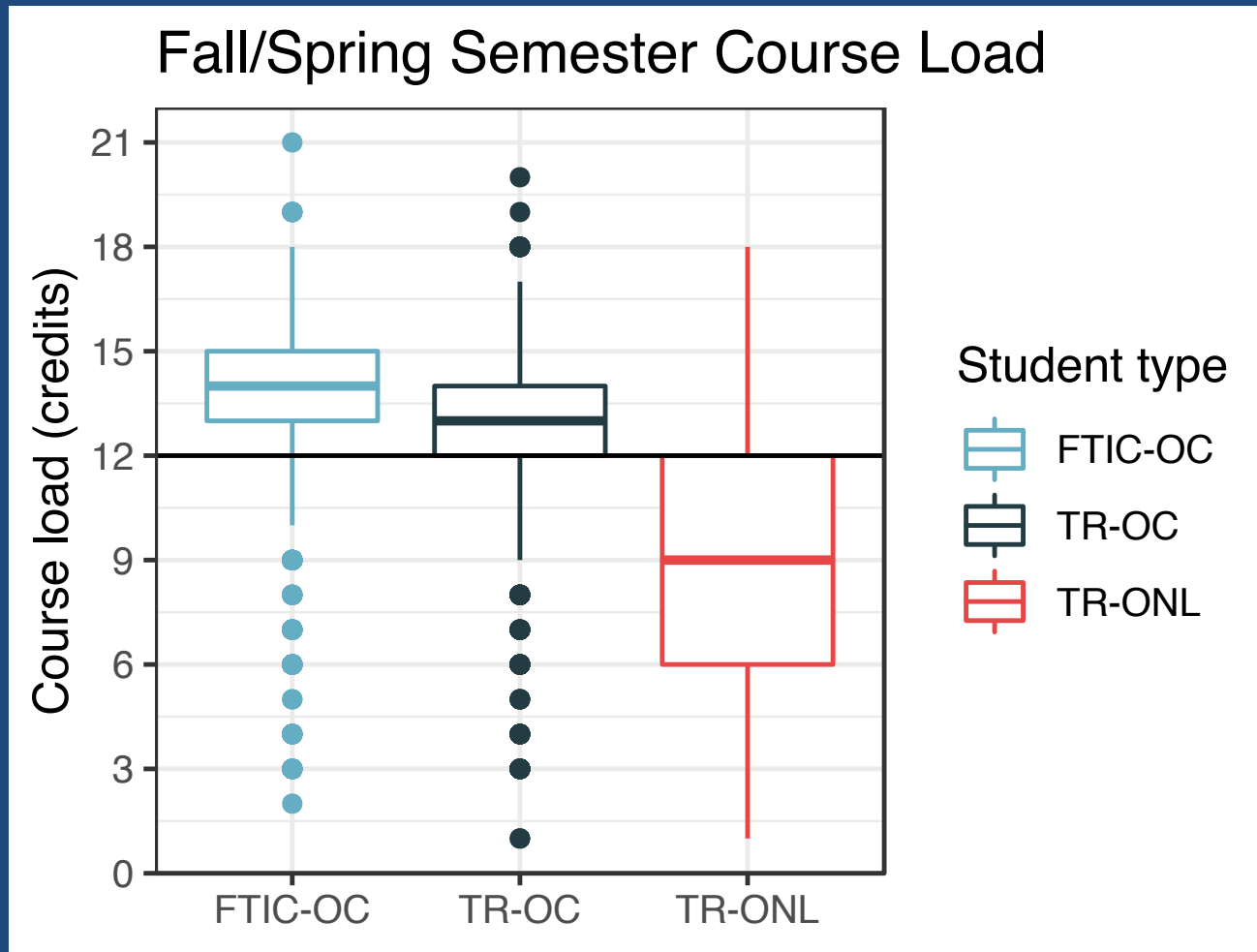
< retention and GPA

> Work full-time

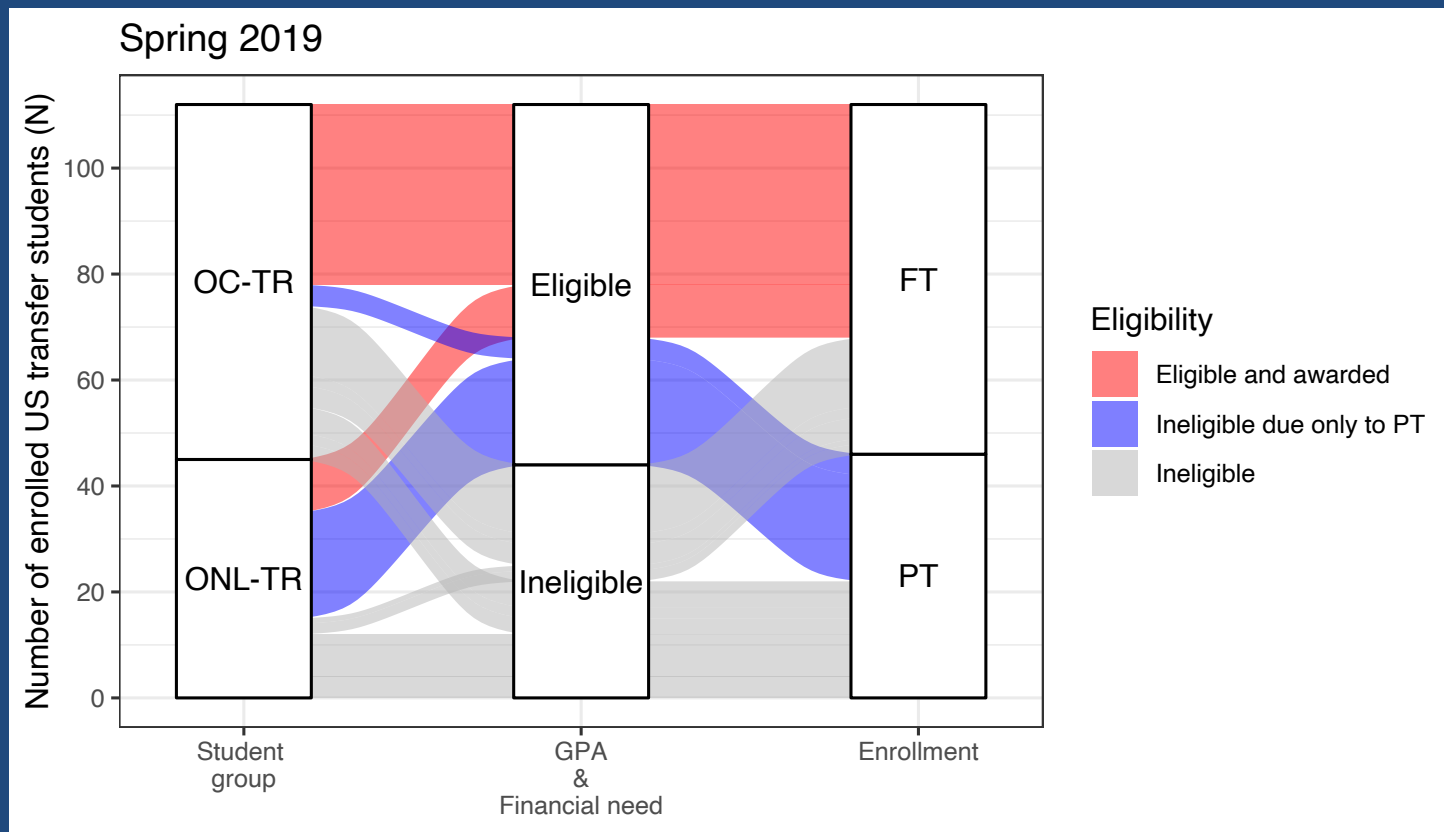
> Enroll part-time

Trends from literature and from our own cohort studies: Drew et al., 2015,2016 and Ardissonne et al 2020 (submitted)

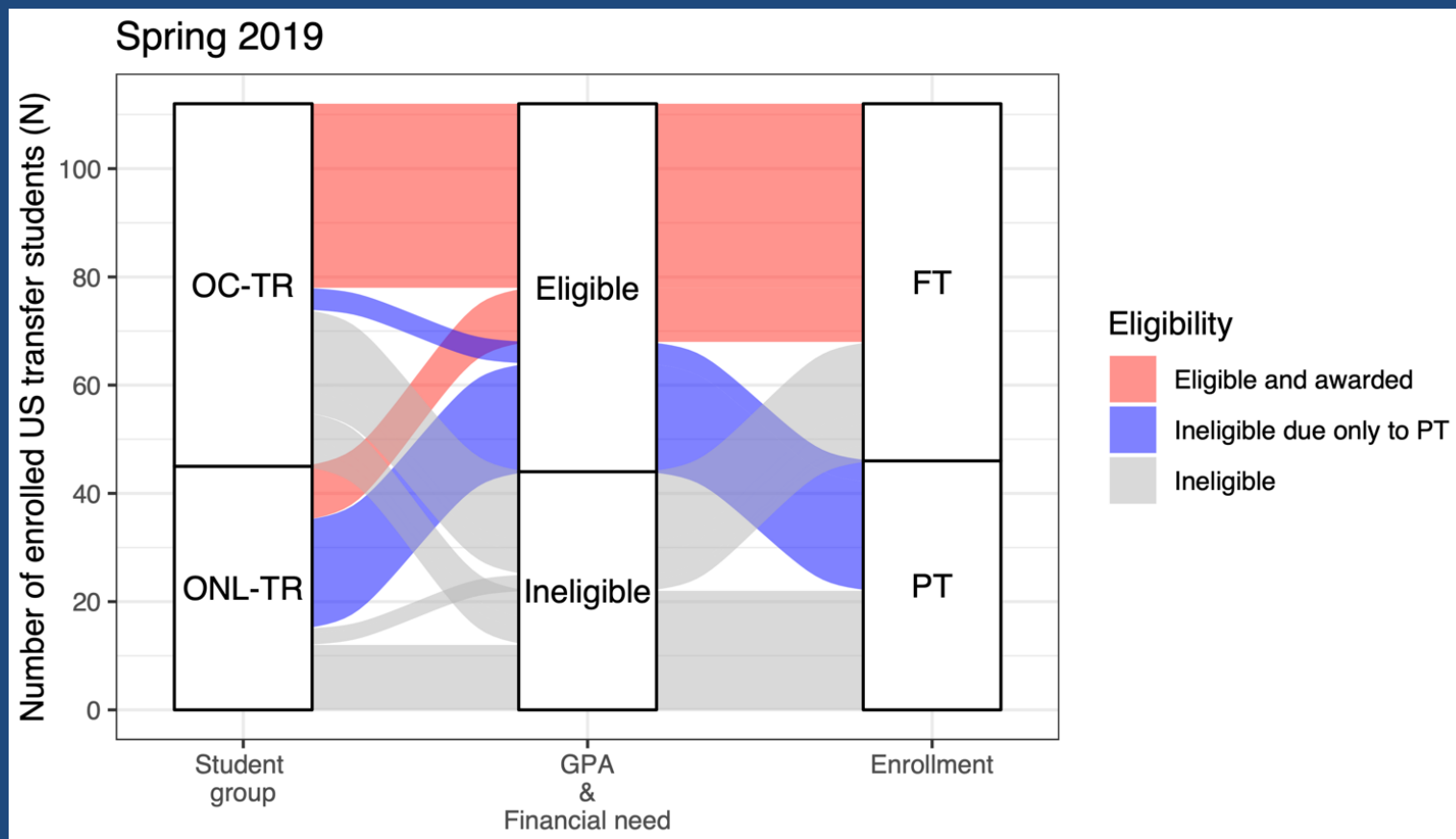
Majority of Online Transfers Enroll < Full-time



Pre-COVID: >40% of eligible TR students excluded from S-STEM only because of enrollment status

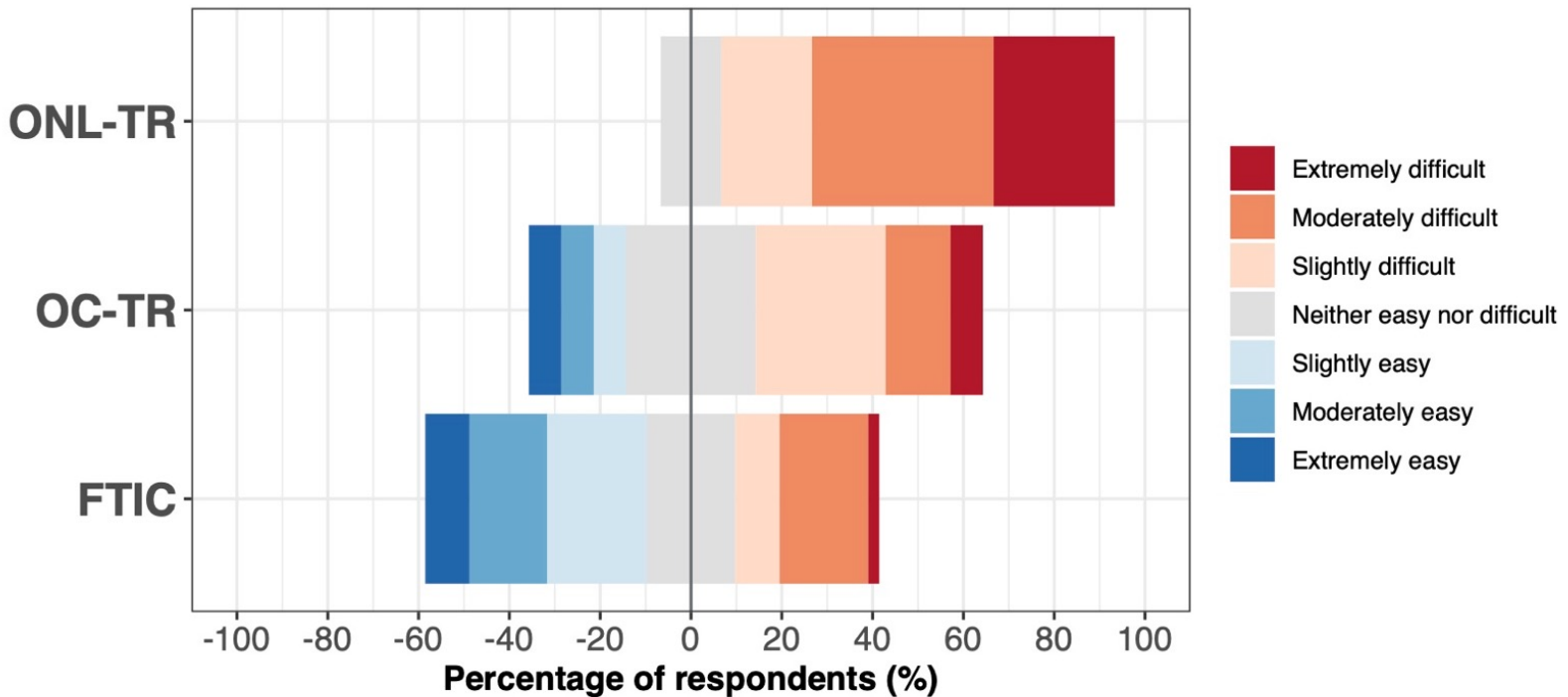


Pre-COVID: >40% of eligible TR students excluded from S-STEM only because of enrollment status

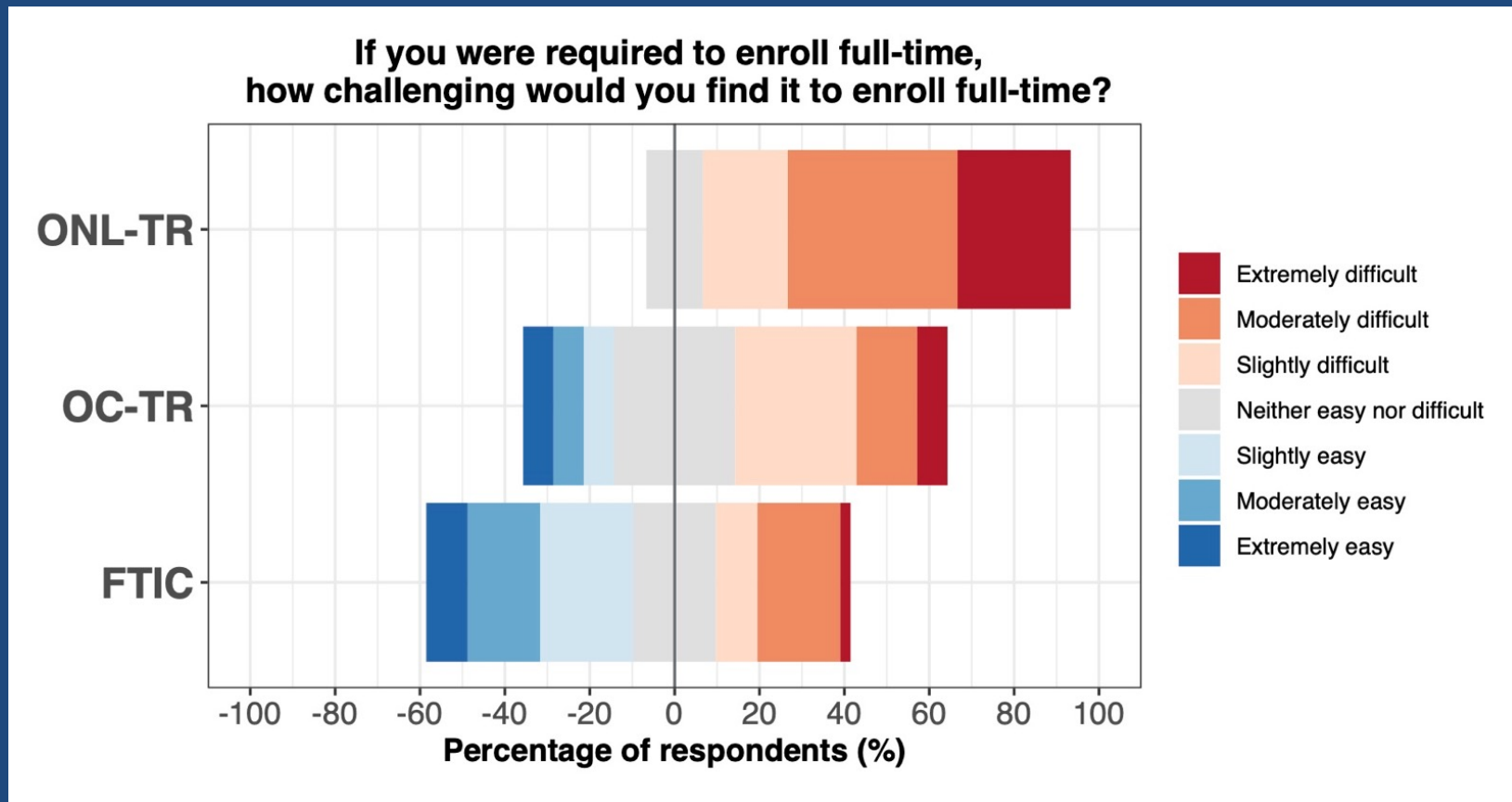


FT enrollment is more challenging for transfer students

If you were required to enroll full-time, how challenging would you find it to enroll full-time?

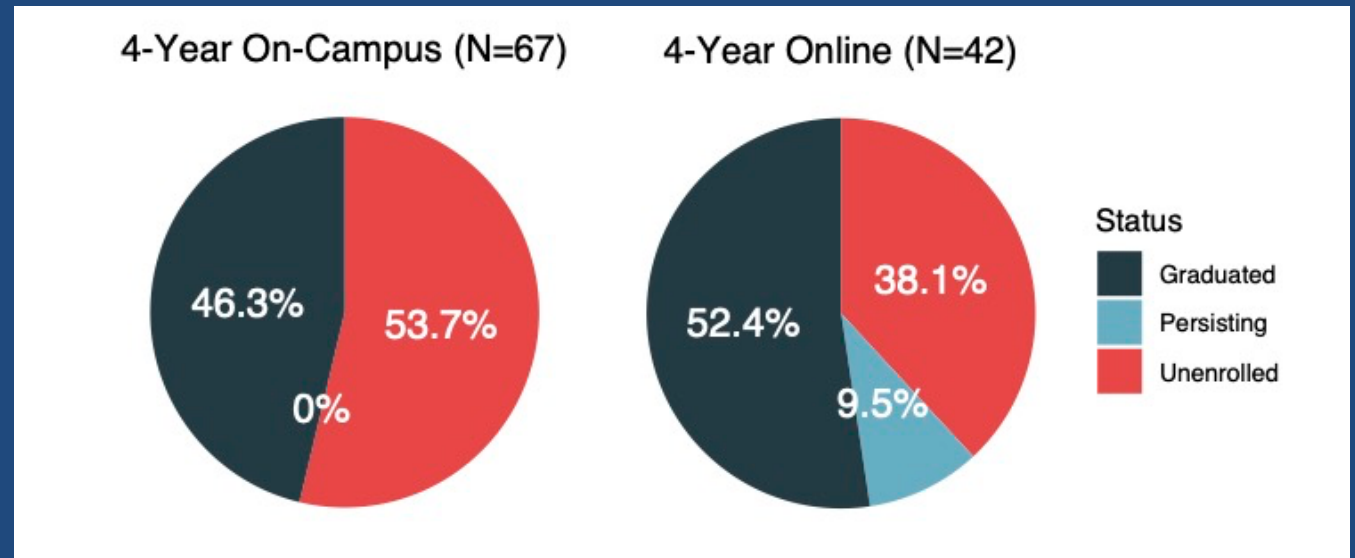
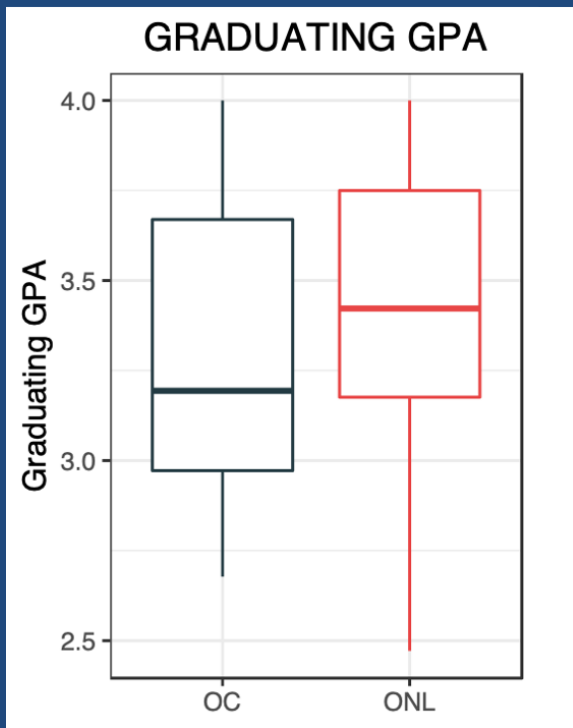


FT enrollment is more challenging for transfer students



For some, it's impossible.

Part-time enrollment of online transfers does not affect outcome. >GPA and >retention than FT On-campus transfers



*On-campus vs. Online Transfer student comparison; 4-year graduate cohort (2011-2014 academic years)

COVID Changed Everything

On-campus FTIC enrollment ↓

On-campus Transfer enrollment ↑

Online enrollment ↑

URM participation ↑ overall from 25 to 32%

Lecture courses remained online

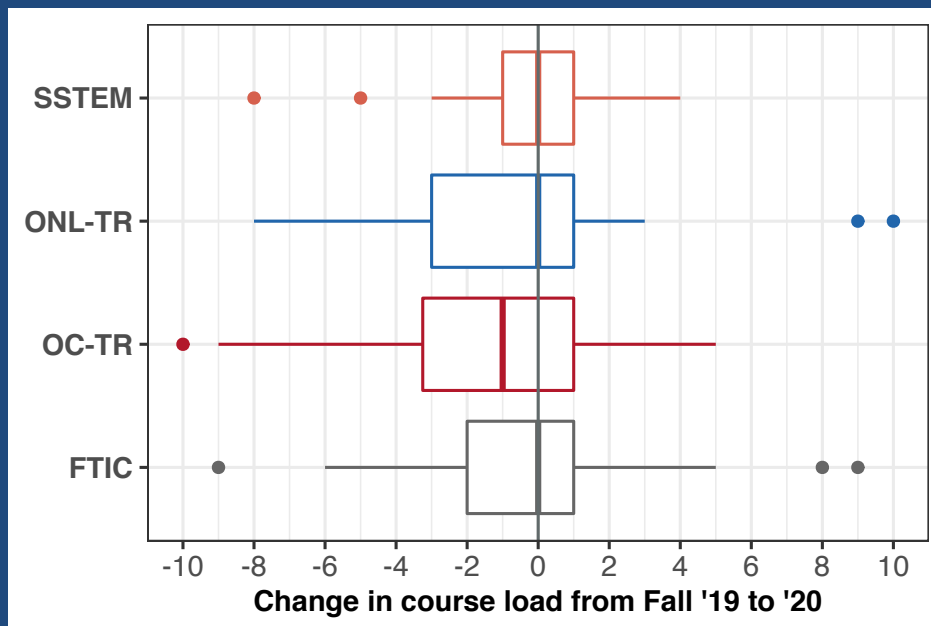
Lab courses → online

Policy change for S-STEM full-time enrollment

THANK YOU, NSF!



Biggest impact for new S-STEM Online-TR scholars
Cohort increased 4 → 18
50% < Full-time



Continuing Scholars had no overall change in course load from Fall '19 to Fall '20 despite policy shift

Stay tuned for data on PT S-STEM success!

COVID-19 Impact Survey

158 respondents

17% of all MCS students

18 S-STEM scholars

June, 2020

50 Item Instrument developed by S. Galindo

Overall, students did not report major academic impacts

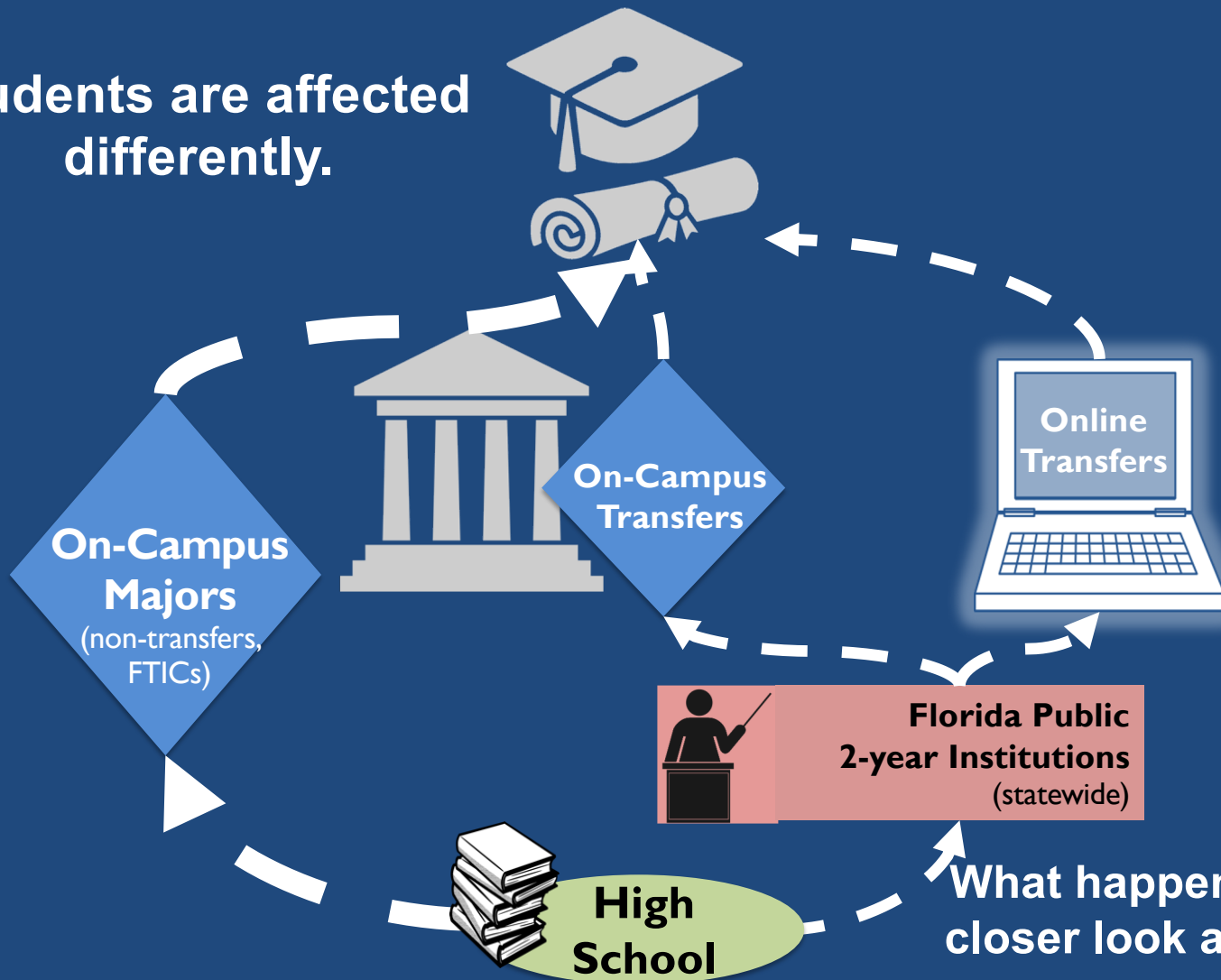
12% withdrew from a course

20% elected to take an S/U option

42% felt their GPA decreased

84% no delay in their expected graduation

Students are affected differently.

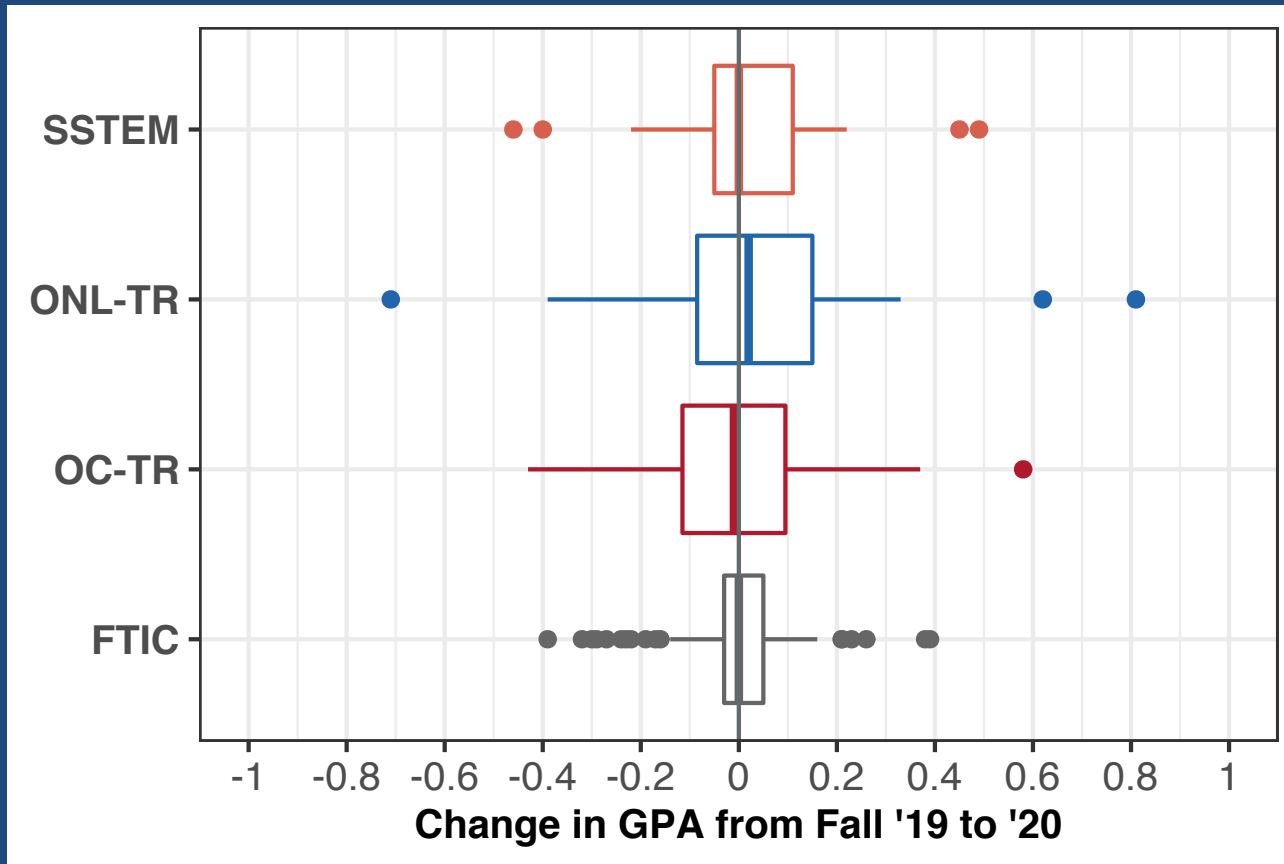


What happens when we take a closer look at different student paths?

S-STEM students reported more academic impacts

Spring 2020 Effects	FTIC	OC-TR	ONL-TR	SSTEM
Withdraw from course	18%	18%	6%	22%
S/U option	15%	18%	13%	61%
Decreased GPA	45%	36%	56%	72%
Graduation Delay	5%	45%	13%	50%

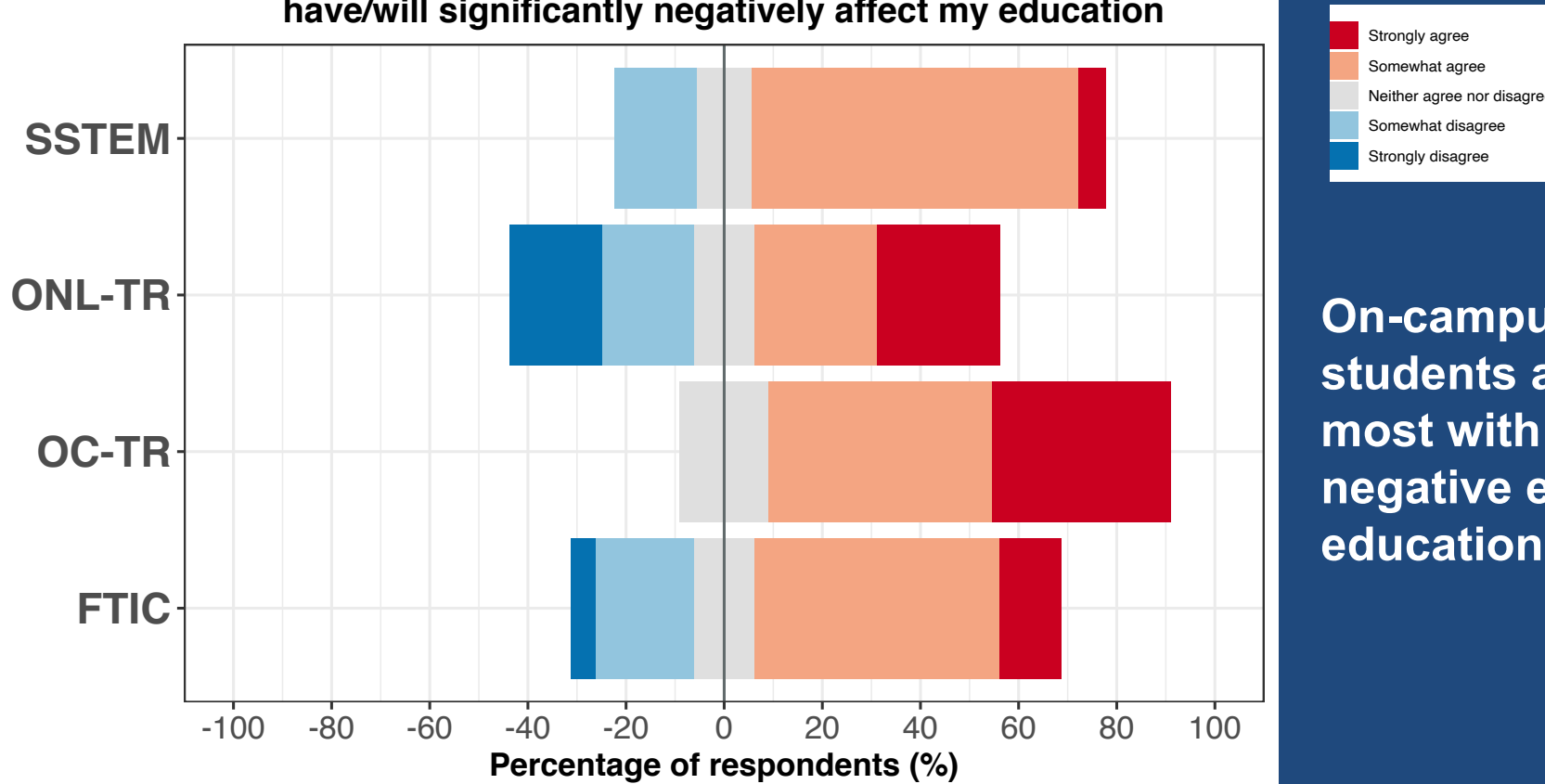
No GPA change from F 19 to F 20



Perceived drop in GPA due to COVID was not confirmed for continuing students

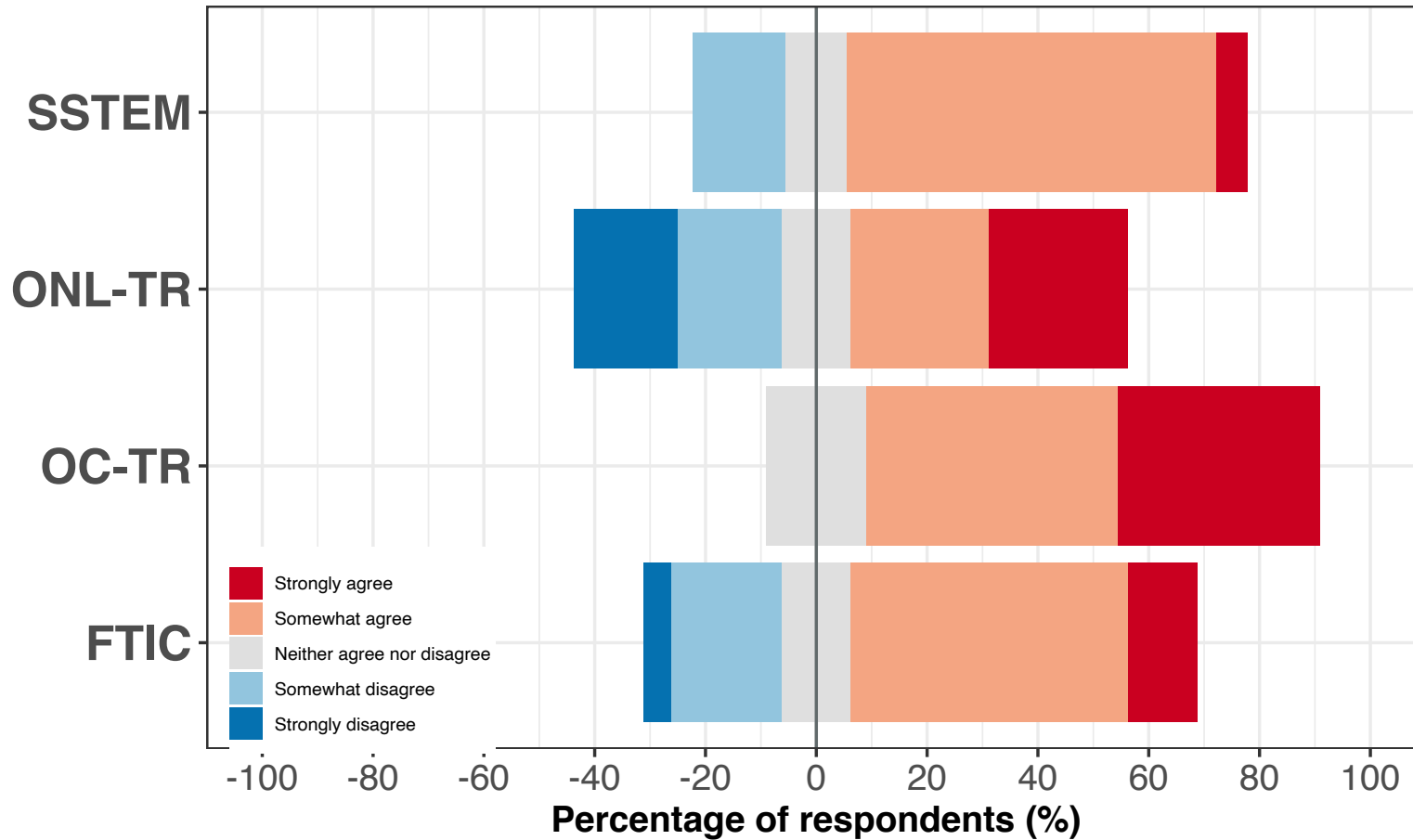
Most S-STEM students agree that COVID will negatively affect education

Adjustments made due to the response to the COVID-19 pandemic have/will significantly negatively affect my education



On-campus transfer students agree the most with the negative effects on education

Adjustments made due to the response to the COVID-19 pandemic have/will significantly negatively affect my education



All groups cited concerns over the quality of the education

80% reported impact to summer plans. No research, internships or volunteering.

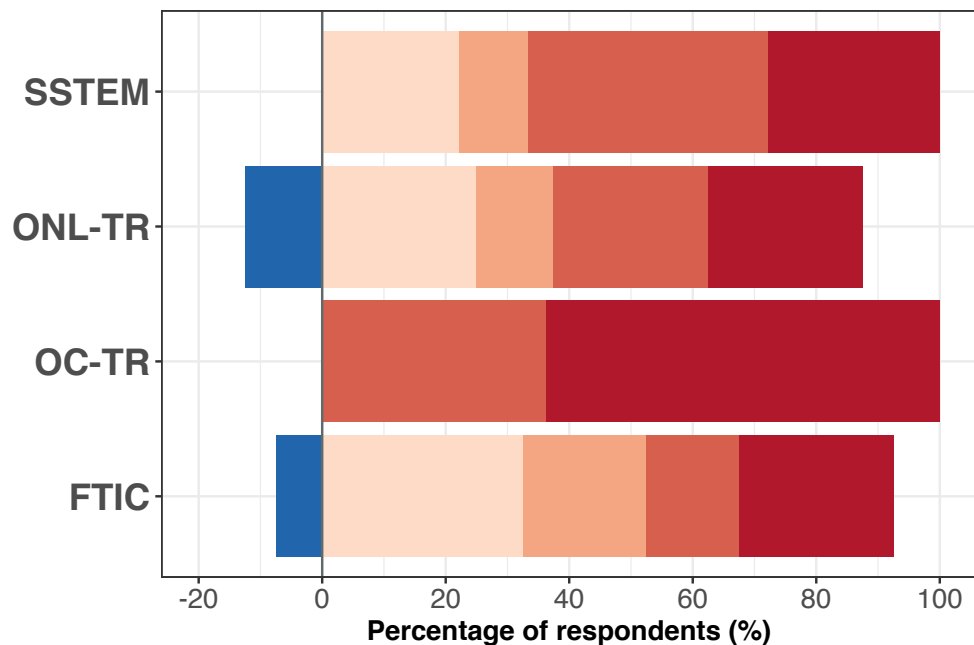


Most students (76%) report that COVID has not changed immediate educational goals or career plans

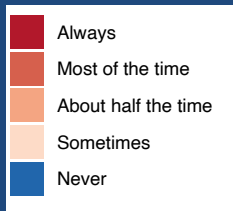
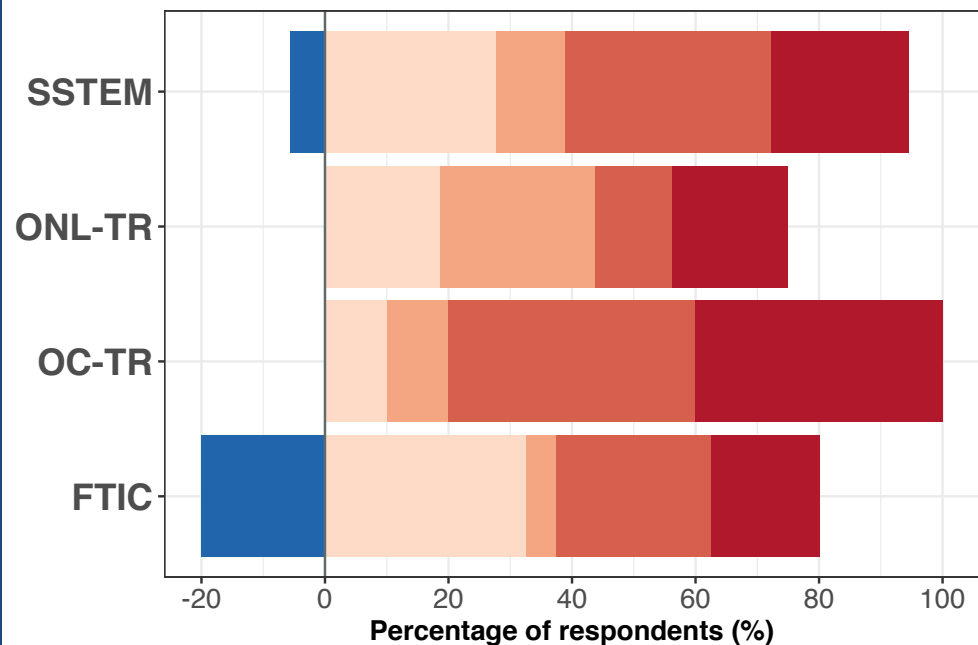
***Follow up survey administered in Fall 2020 will provide interesting longitudinal data on this question.**

All Students Experiencing Intense Stress

Over the last 2 weeks how often have you experienced Feeling nervous anxious or on edge

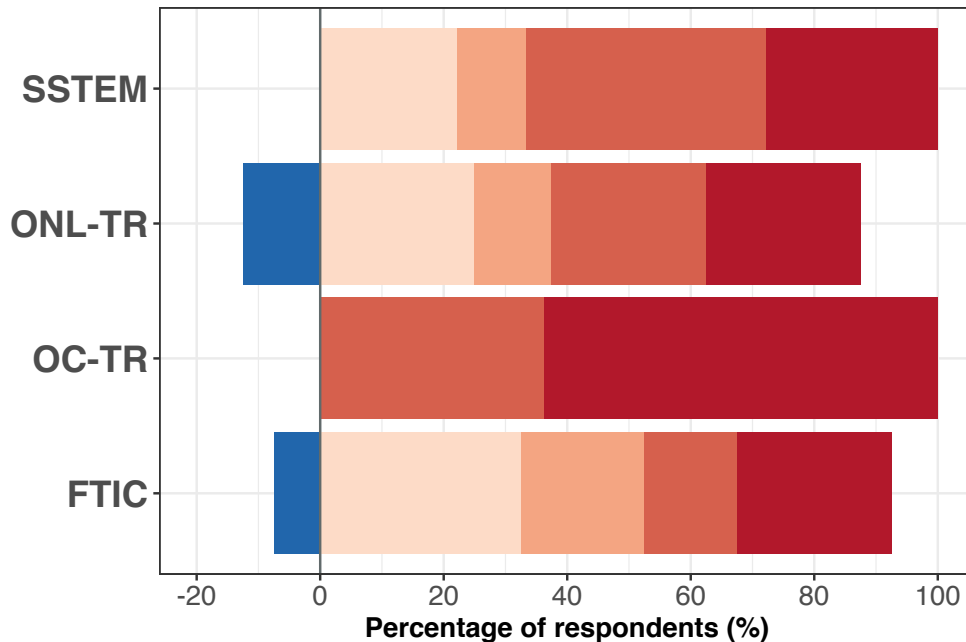


Over the last 2 weeks how often have you experienced Not able to stop or control worrying

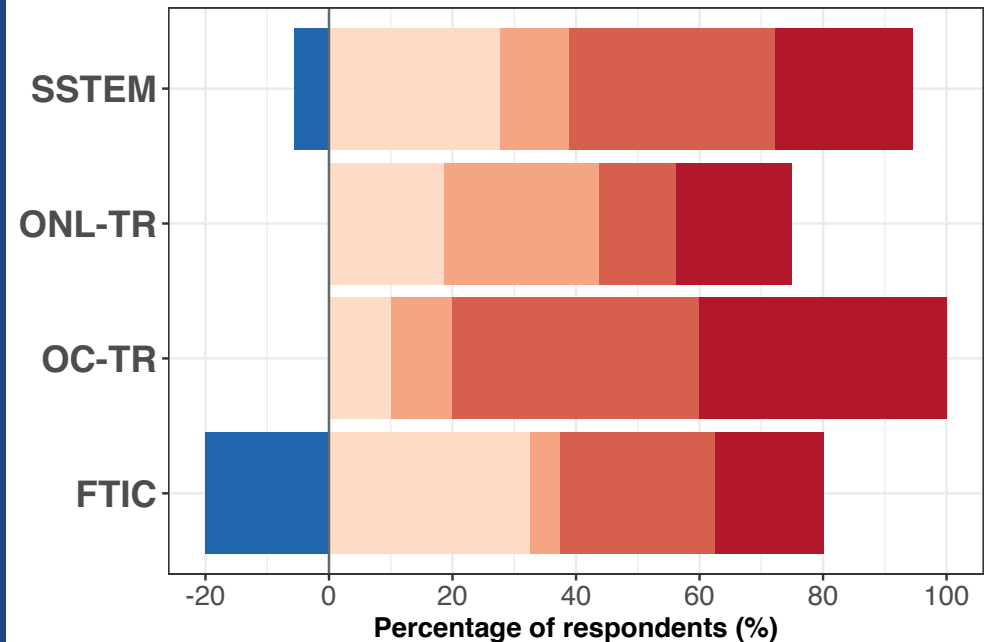


All Students Experiencing Intense Stress

Over the last 2 weeks how often have you experienced
Feeling nervous anxious or on edge

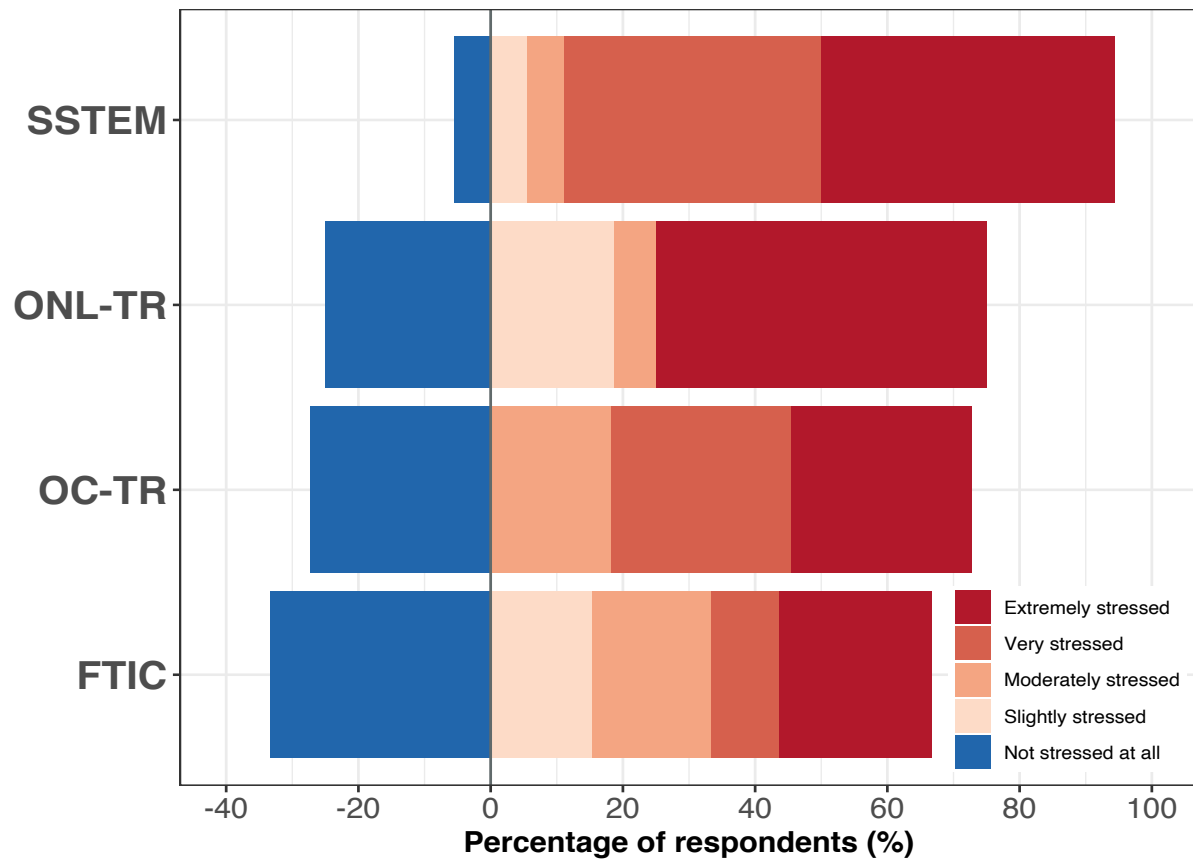


Over the last 2 weeks how often have you experienced
Not able to stop or control worrying



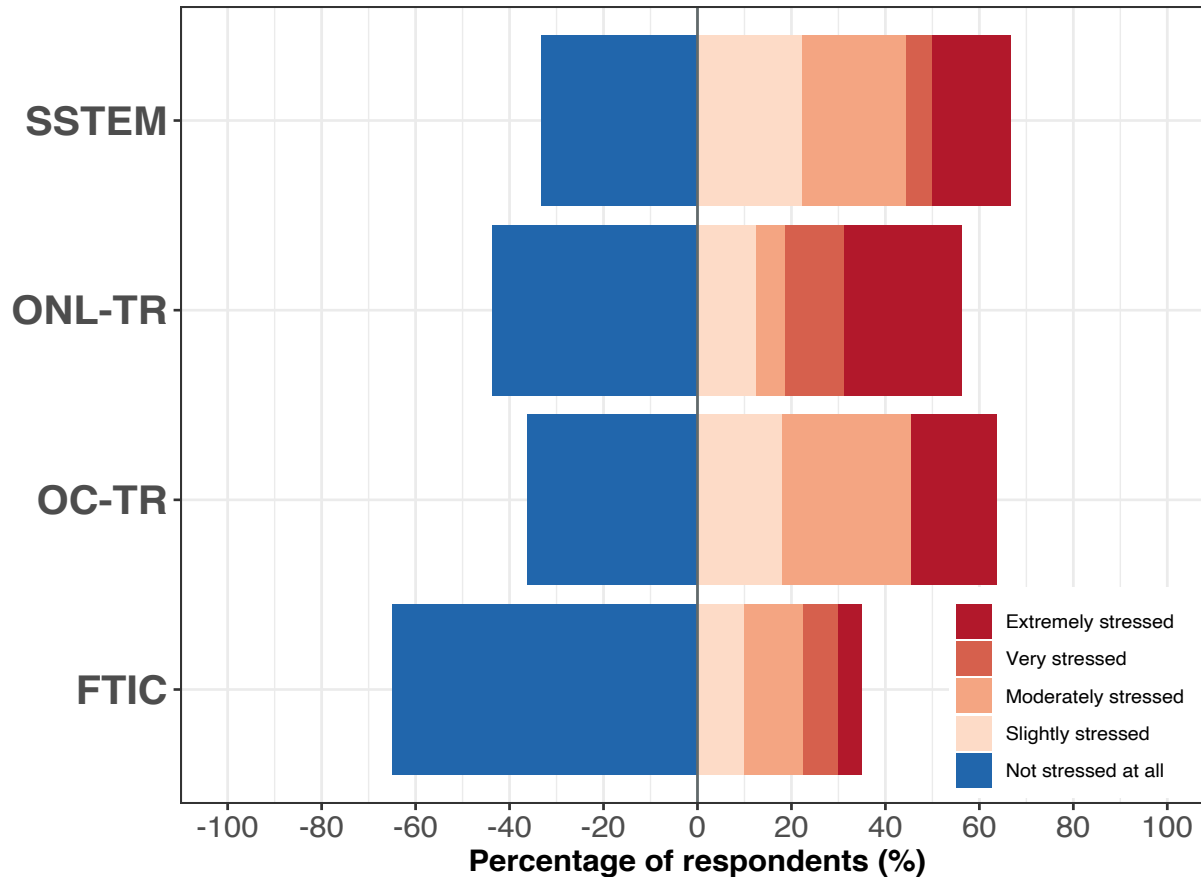
S-STEM students and On-campus transfer students report more stress than FTIC and online students. Most S-STEM students are on-campus Transfers.

COVID impact on stress in daily life
Meeting financial obligations if you are unable to work



**S-STEM Students
experience more
stress in meeting
financial
obligations**

**COVID impact on stress in daily life
Providing enough food for myself and my family**



Food Insecurity is a concern/stressor for > half of all respondents, but more so for transfer students than FTIC students

On-campus Transfer Students (both S-STEM and non S-STEM) experiencing more COVID impacts

SES Indicators	FTIC	OC-TR	ONL-TR	SSTEM
<\$25,000 household income	18%	52%	11%	61%
>\$150,000	35%	4%	17%	0%
<4-yr degree (Parent)	28%	70%	50%	78%
Grad/Prof degree (Parent)	45%	7%	22%	0%

On-campus Transfer Students (both S-STEM and non S-STEM) experiencing more COVID impacts

SES	FTIC	OC-TR	ONL-TR	SSTEM
<\$25,000 household income	18%	52%	11%	61%
>\$150,000	35%	4%	17%	0%
<4-yr degree (Parent)	28%	70%	50%	78%
Grad/Prof degree (Parent)	45%	7%	22%	0%

BUT... S-STEM program mitigates these factors. S-STEM students have > retention and GPA. We are tracking to look at longer term outcomes.

How do we help?

Sharing mental health resources

Financial aid and food pantry program

**Working with Extension to connect resources
for students around the state**

**Developing Online/Remote summer research
program**

Follow up Survey Fall 2020

Acknowledgements

Lexi Ardissonne
Eric Triplett
Monika Oli
Jacqueline Lee
Bryan Korithoski
Mary Jane Lukas
Sebastian Galindo-Gonzalez
Macarena Urrets-Zavalía
Al Wysocki
Elaine Turner

Miami Dade College
Victor Okofor
Samantha Cepoudy

DUE 1643780: Florida Pathways to Success:
A Research University/Minority-Serving
Community College Partnership to Enhance
Retention and Diversity of Transfer Students

Data Sources and Support:
UF Enterprise Analytics



FLORIDA PATHWAYS
TRANSFER STUDENT
SCHOLARSHIPS

MICROBIOLOGY
& CELL SCIENCE

